

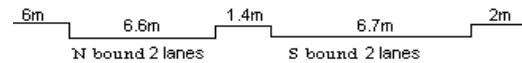
YEAR 2022

CORE STATION 5004

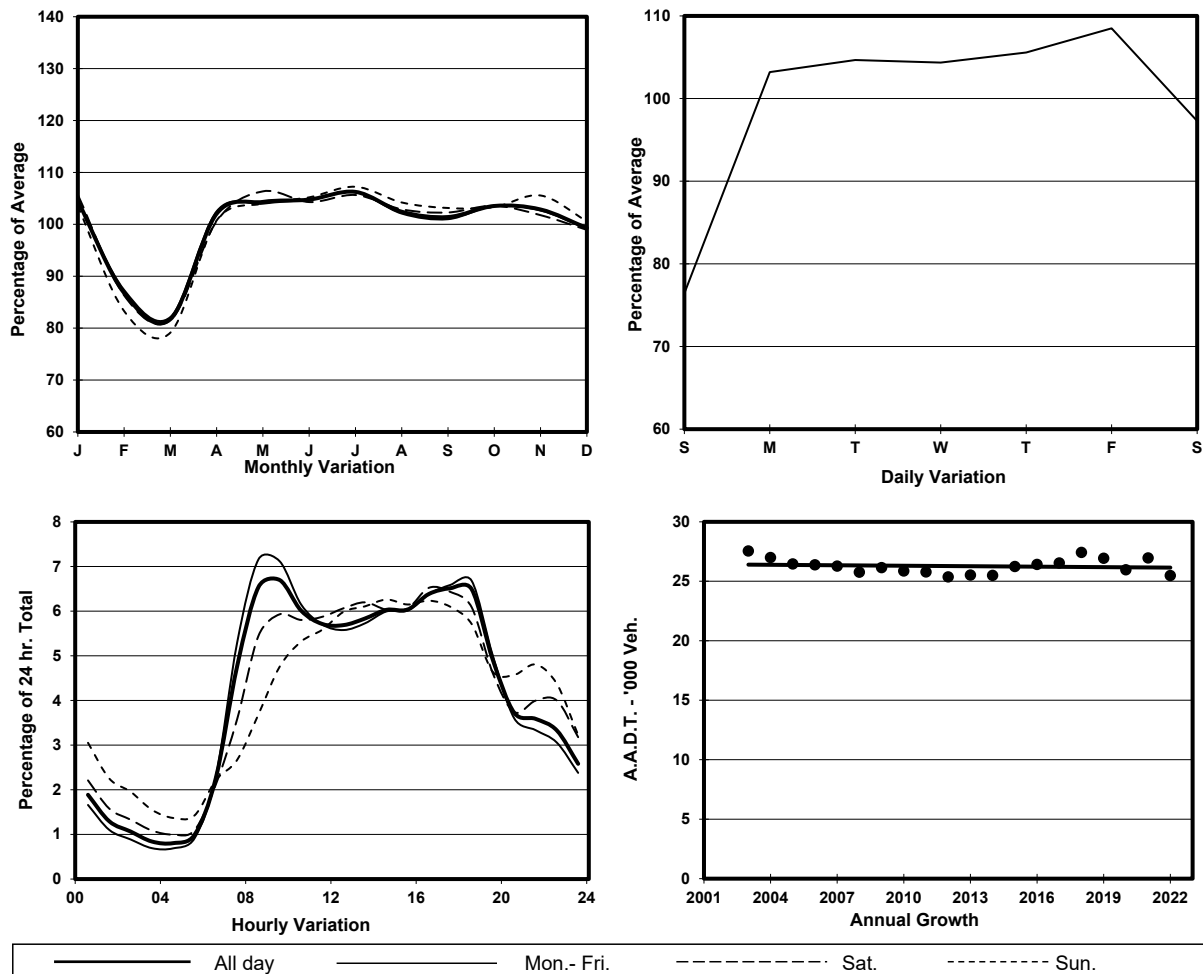
ROAD NETWORK MAJOR

ROAD TYPE PRIMARY DISTRIBUTOR

LINK CASTLE PEAK RD - KWAI CHUNG (from TAI WO INT to WO YI HOP RD)



1. TRAFFIC FLOW VARIATION AND GROWTH



2. TRAFFIC CHARACTERISTICS (BY DIRECTION)

Parameter	All - Day	Mon. - Fri.	Sat.	Sun.
SOUTH BOUND				
A.A.D.T.	11300	11930	11330	9140
R 12 / 24 - %	72.3	74	69.5	65
R 16 / 24 - %	87.9	88.9	86.3	83.3
AM Peak Hour	0800-0900	0800-0900	0900-1000	0900-1000
One-way flow at AM peak hour	760	880	690	450
T - % (AM)	-	-	-	-
PM Peak Hour	1800-1900	1800-1900	1700-1800	1700-1800
One-way flow at PM peak hour	750	820	700	550
T - % (PM)	-	-	-	-
Prop.of commercial vehicles - 16 hr.	-	-	-	-
NORTH BOUND				
A.A.D.T.	14180	15240	13800	10600
R 12 / 24 - %	73	74.7	70.5	64.2
R 16 / 24 - %	88.6	89.8	86.5	82.7
AM Peak Hour	0900-1000	0900-1000	0900-1000	0900-1000
One-way flow at AM peak hour	950	1090	800	490
T - % (AM)	-	-	-	-
PM Peak Hour	1600-1700	1600-1700	1600-1700	1600-1700
One-way flow at PM peak hour	950	1020	950	690
T - % (PM)	-	-	-	-
Prop.of commercial vehicles - 16 hr.	-	-	-	-

3. OTHER INFORMATION AND COMMENT